

CIVILSCAPE Network Meeting on *Citizens and Landscape*
and General Assembly,
11 November 2008,
Villa Careggi, Florence (Italy)

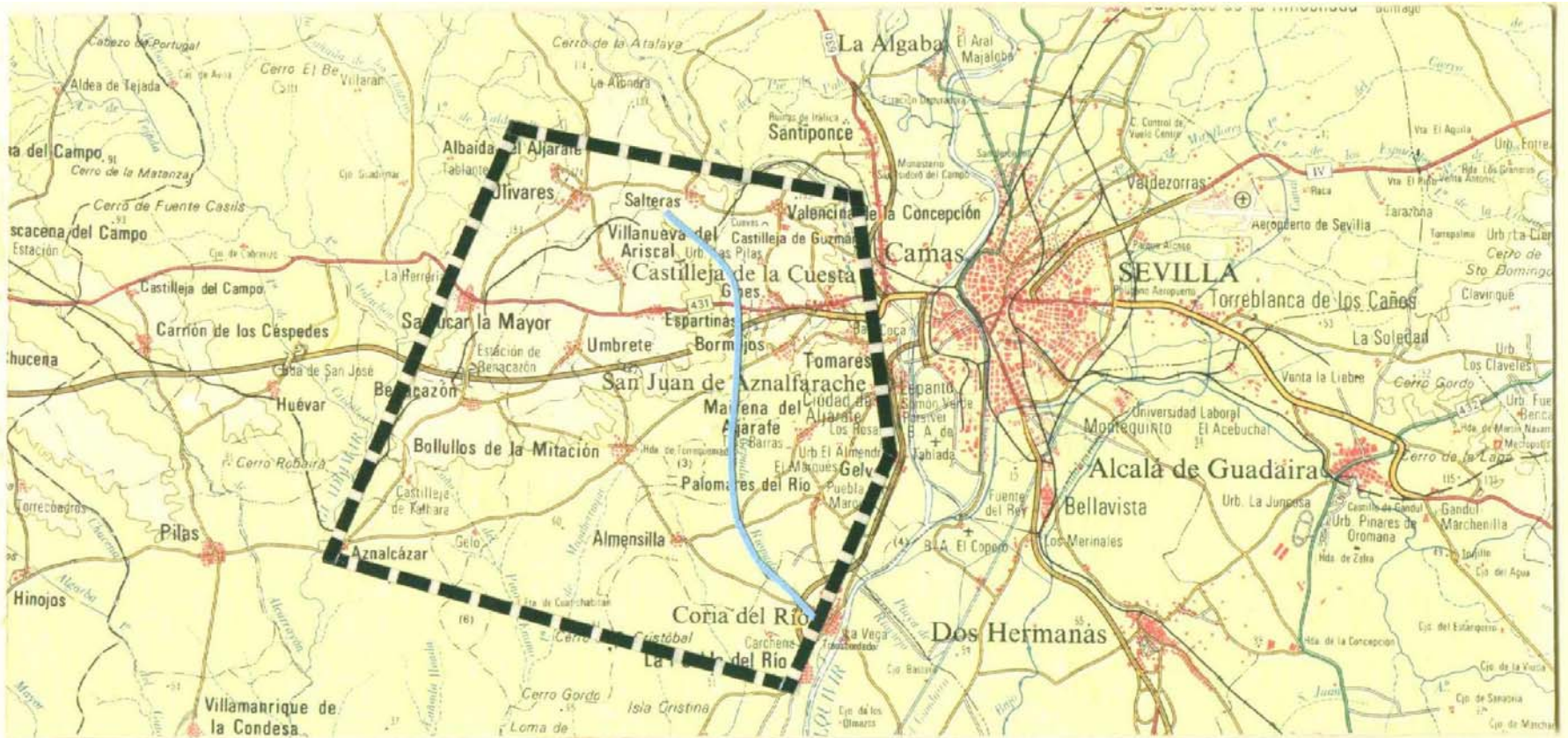
Presentation

ADTA Asociación en Defensa del Territorio del Aljarafe



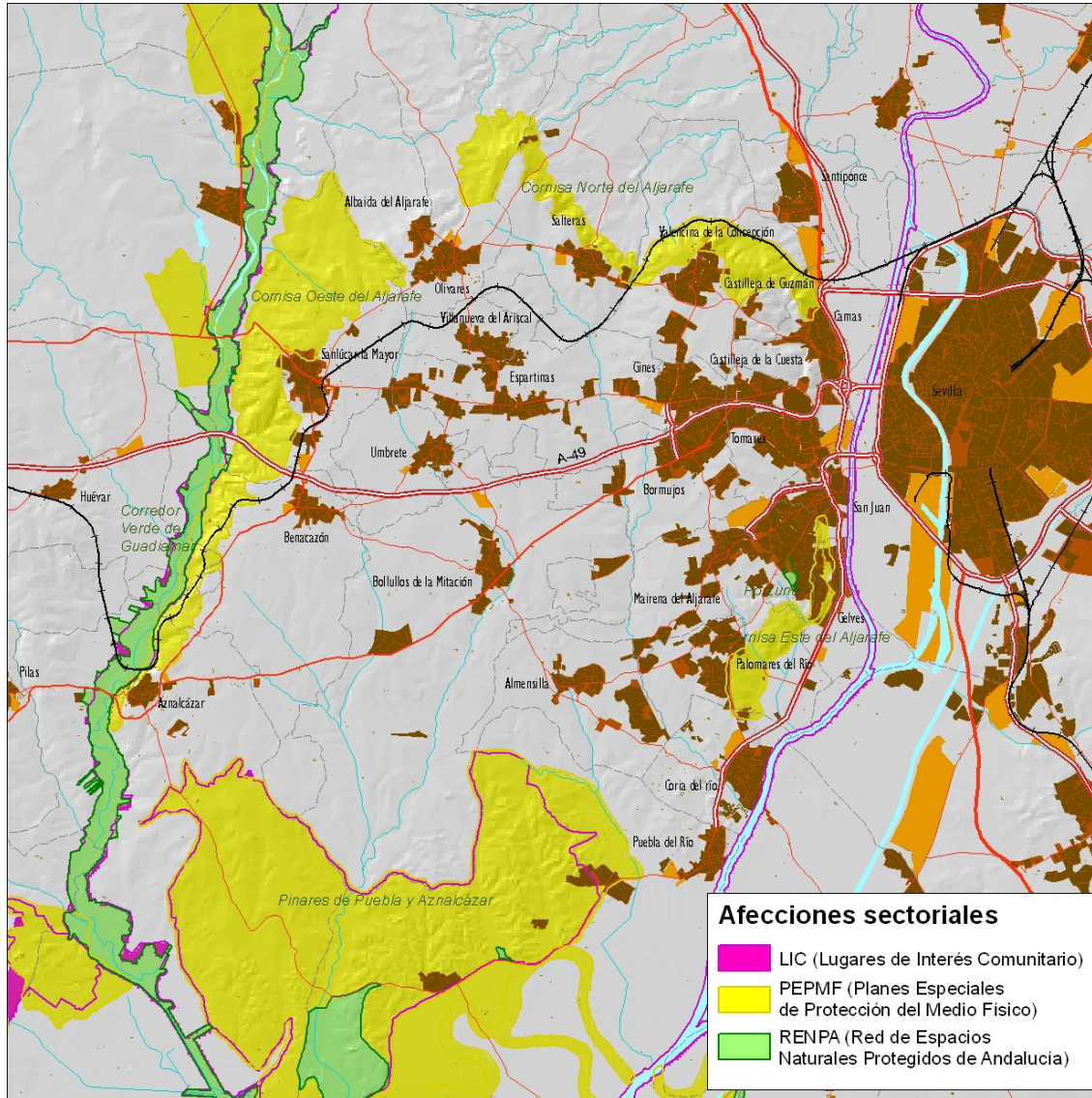
Andalusian Environmental Award 2007

Situation of Aljarafe



LA COMARCA DEL ALJARAFE EN EL AREA METROPOLITANA DE SEVILLA

Situation of Aljarafe





ADTA = Association for the Defense of the Territory of the Aljarafe

Adta was founded in 1999

Adta's Goals: To defend the geographical, cultural and ecological values

Activities: Reports, Articles, Exhibitions, Drawing up proposals, Complaints, Meetings, Cooperation with other NGOs, visits and excursions on the territory...

Adta is a NGO Non-governmental Association



Outstanding activities



“Riopudio. Green Corridor of the Aljarafe”.

Proposal for the recovery of the river Riopudio a small river (22 Kms) crossing the area from north to south, the protection of the valley and creation of a big park around the river.

The pollution, the wild town planning, and a highway project endanger these places.

Adta and another NGOs are fighting for to defense of these spaces.



“Riopudio. Green Corridor of the Aljarafe”.

The authorities have assumed the idea partially:

A project of restoration of the stream Riopudio was started (jul 2008) (15 Kms, 120 hectares, 14.000.000 €, 4 years development)

A project of restoration of the Royal Cattle Track of Isla Mayor to Medellín (one of the most important cattle roads in the Spain) has started.

The regional planning recognizes the value of the landscape of the area.

But severe threats still persist: wild urban growth, SE-40 highway...

RIOPUDIO

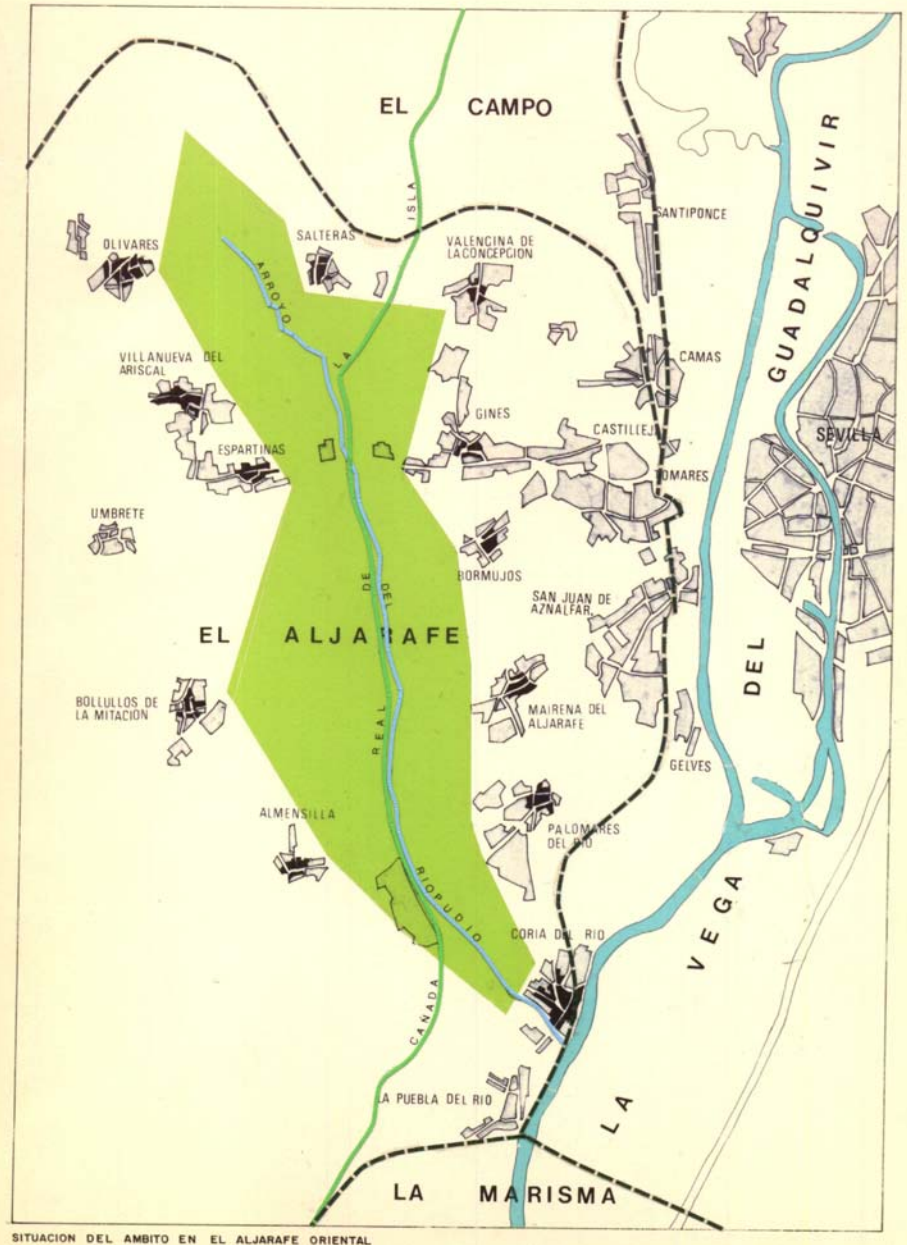
corredor verde del Aljarafe

ADTA

EL CORREDOR VERDE
EN EL AREA METROPOLITANA

FREE SPACE IN THE METROPOLITAN AREAS

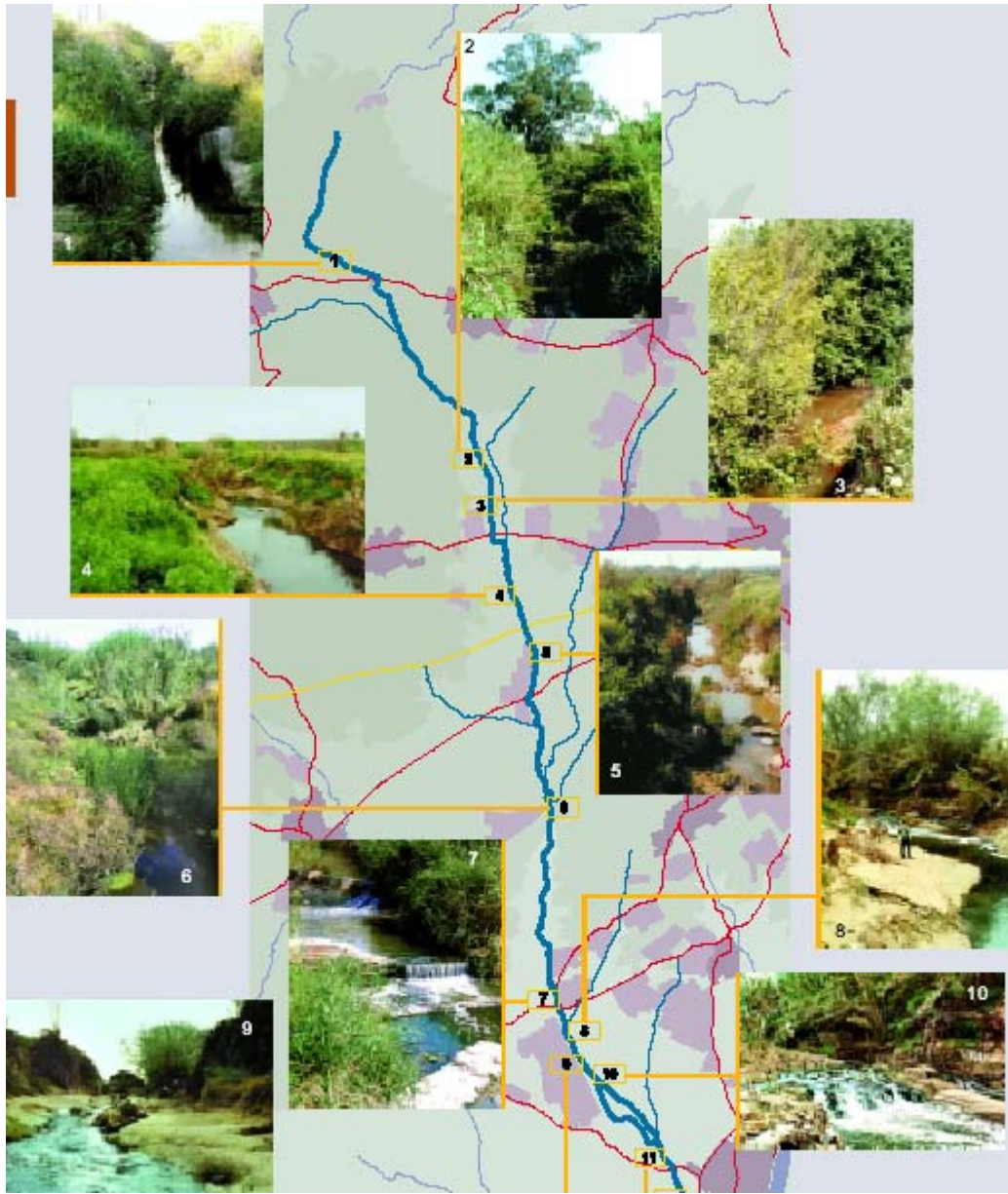
In the metropolitan areas, the spaces conserving rural characteristics and natural as well as landscape values have special importance for their capacity to preserve the historical identity, to improve the environment and to structure the urban development.





EL ARROYO RIO PUDIO Y LA CAÑADA REAL DE LAS ISLAS,
UN SISTEMA TERRITORIAL SINGULAR EN EL ALJARAFE Y
EN EL ÁREA METROPOLITANA DE SEVILLA

**SPACE WITH IMPORTANT
NATURAL AND
ENVIRONMENTAL VALUES IN
THE METROPOLITAN AREA OF
SEVILLE**





EL ARROYO RIOPUDIO Y LA CAÑADA REAL DE LAS ISLAS,
UN SISTEMA TERRITORIAL SINGULAR EN EL ALJARAFE Y
EN EL ÁREA METROPOLITANA DE SEVILLA.

REMARKABLE LANDSCAPE VALUES

Besides its natural and environmental values, the basin of the Riopudio located in an area with special visual conditions, has an important significance as a reserve of the characteristic landscape of the Aljarafe.





EL ARROYO RIOPUDIO Y LA CAÑADA REAL DE LAS ISLAS,
UN SISTEMA TERRITORIAL SINGULAR EN EL ALJARAFE Y
EN EL ÁREA METROPOLITANA DE SEVILLA.

REMARKABLE PATRIMONIAL INVENTORY FROM THE PREHISTORY UNTIL OUR MOST RECENT HISTORY

The wide and white buildings of the country estates (haciendas), located in the middle of the olive groves, next to the olive groves or tight among the houses of the towns. Their mirador towers, the counterbalance of the beam mills besides being jewels of the historical-artistic patrimony they also are the landmarks that enhance the landscape of characteristic olive grove of the area



Hacienda de Torjor



Hacienda de Los Placeres



Hacienda de San Esteban



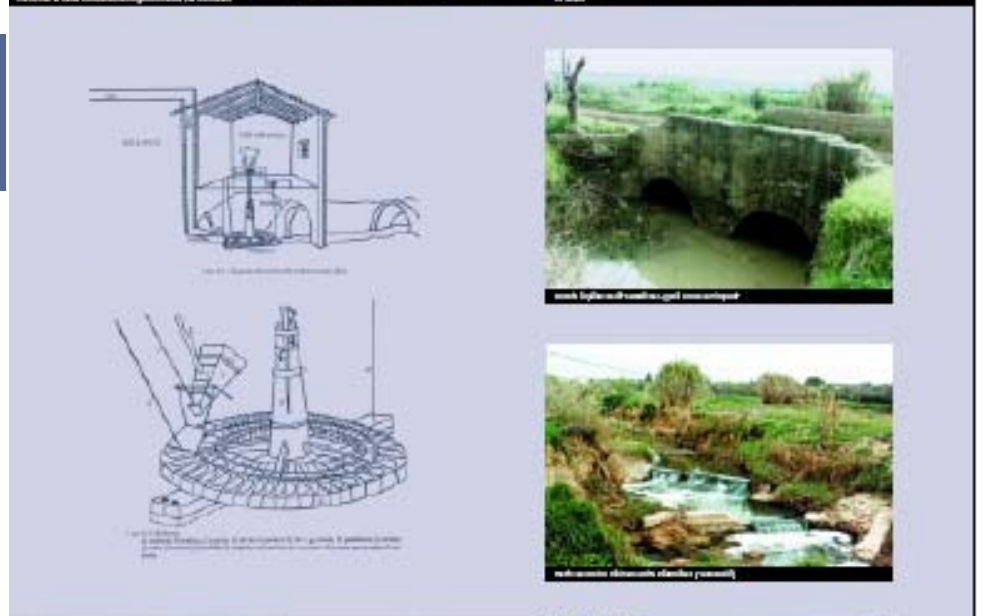


EL ARROYO RIO PUDIO Y LA CAÑADA REAL DE LAS ISLAS, UN SISTEMA TERRITORIAL SINGULAR EN EL ALJARAFE Y EN EL ÁREA METROPOLITANA DE SEVILLA.

REMARKABLE PATRIMONIAL INVENTORY FROM THE PREHISTORY UNTIL OUR MOST RECENT HISTORY

- Bridges and sewers**
- Country Inns**
- Mills and "azudas"**
- Other buildings and constructions of interest**
- The Rocío's pilgrimage**
- The pilgrimage of Torrijos**

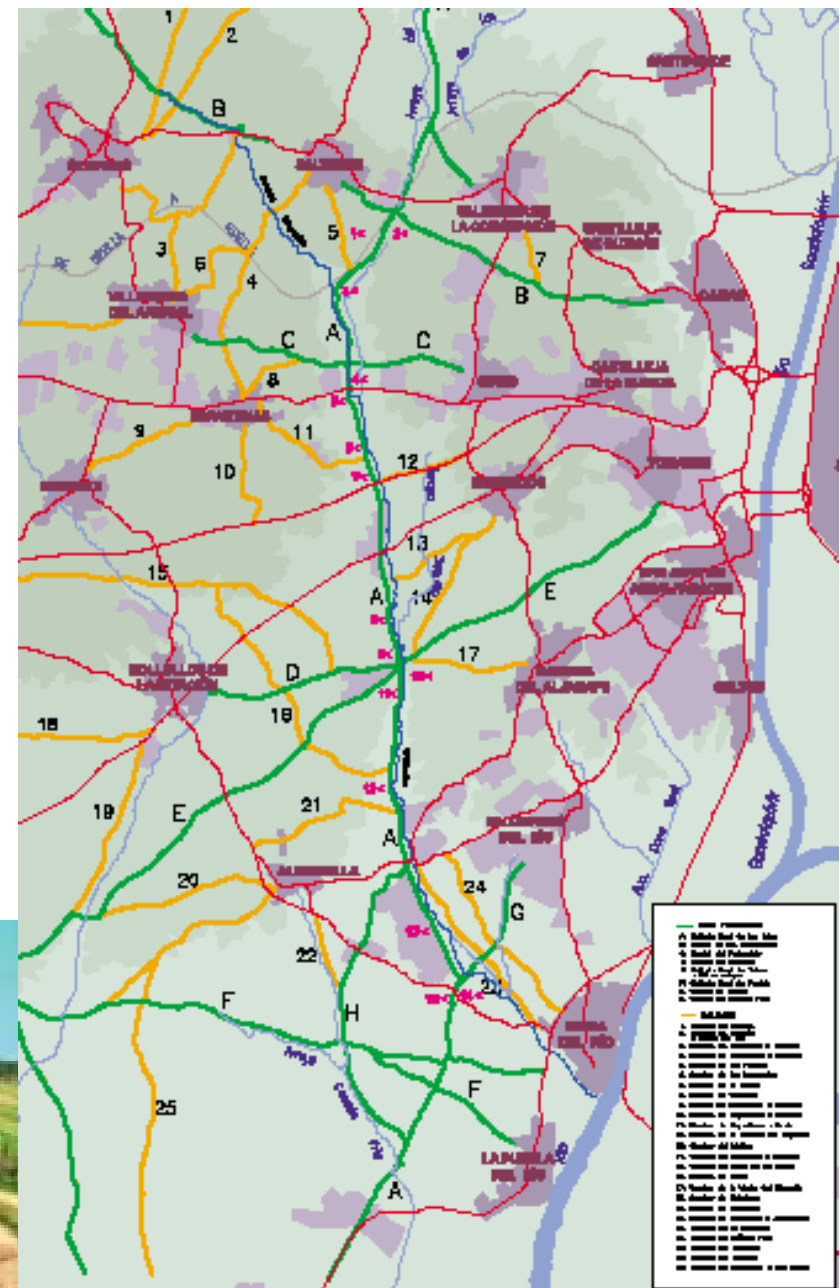
.....





EL ARROYO RIOPUDIO Y LA CAÑADA REAL DE LAS ISLAS,
UN SISTEMA TERRITORIAL SINGULAR EN EL ALJARAFE Y
EN EL ÁREA METROPOLITANA DE SEVILLA.

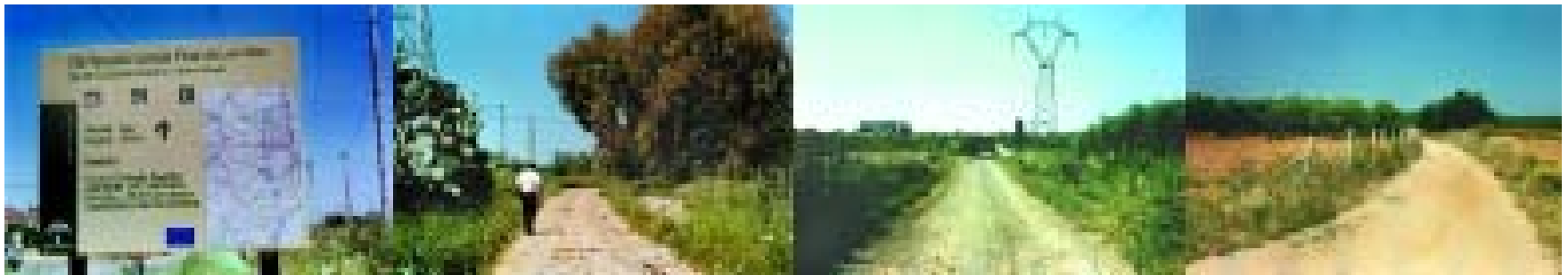
DENSE NET OF ROADS that, from
immemorial time, ties together the towns among
them and with the country properties. They also
allow the communication between them and the
access to the crops and agrarian activities.





EL ARROYO RIOPUDIO Y LA CAÑADA REAL DE LAS ISLAS,
UN SISTEMA TERRITORIAL SINGULAR EN EL ALJARAFE Y
EN EL ÁREA METROPOLITANA DE SEVILLA.

**THE ROYAL CATTLE TRACK
OF ISLA MAYOR TO
MEDELLÍN**, one of the most
important cattle roads in the peninsula,
and axis connection of Doñana - North
Sierra, as we can read in the signaling of
the Environment Councillor Department
of the Junta de Andalusia,





“Archeological and Landscape North-Aljarafe Park”

Proposal to expand the protection and to create an integrate management of a big space, with archeological, landscapes and ecological values.

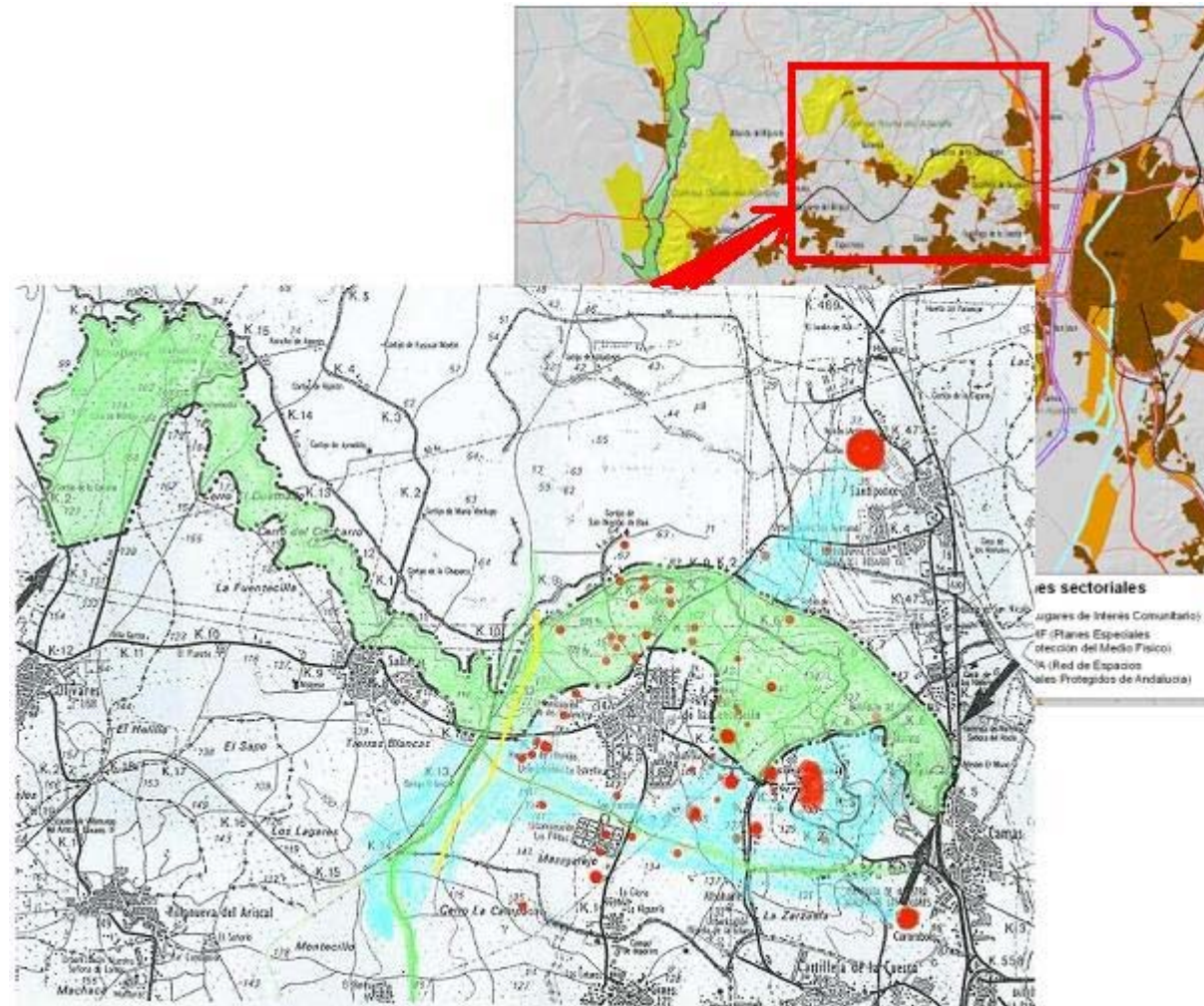
An insufficient protection and the wild town planning, in several towns, and a highway project endanger these spaces.

Adta and others NGOs are fighting in defense of these spaces.

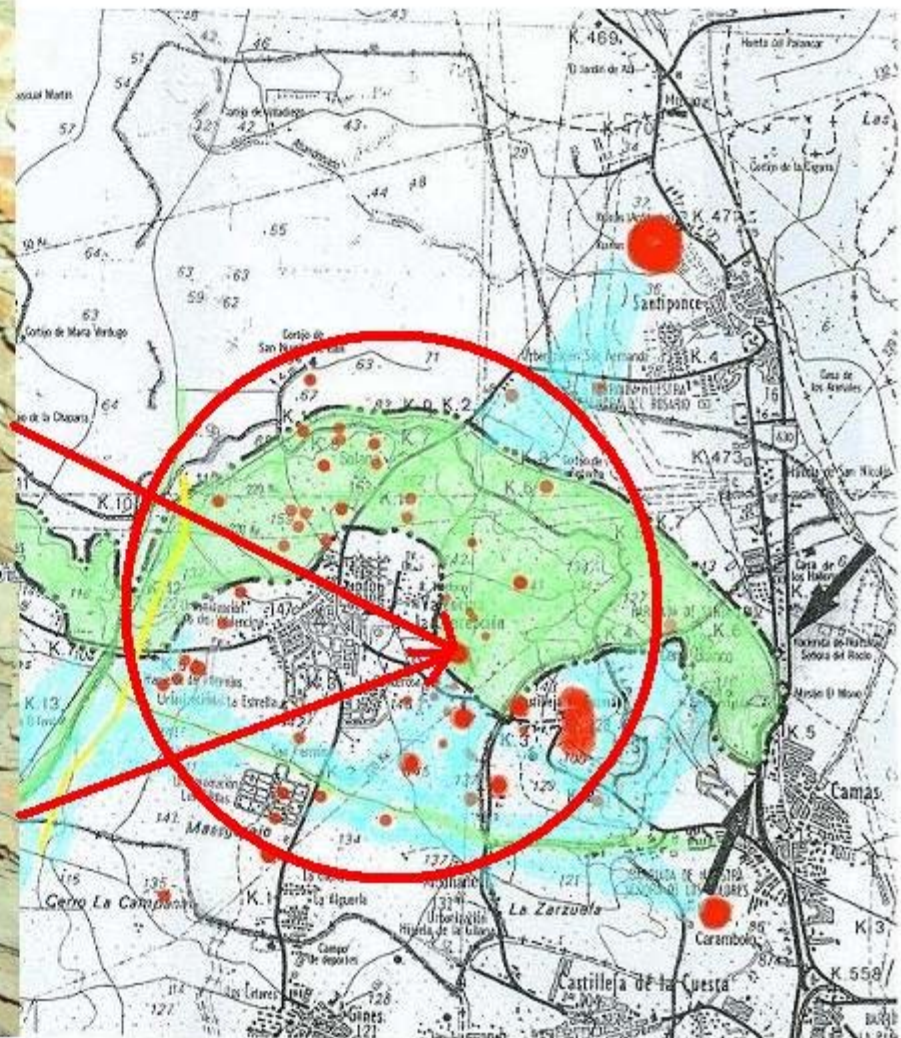
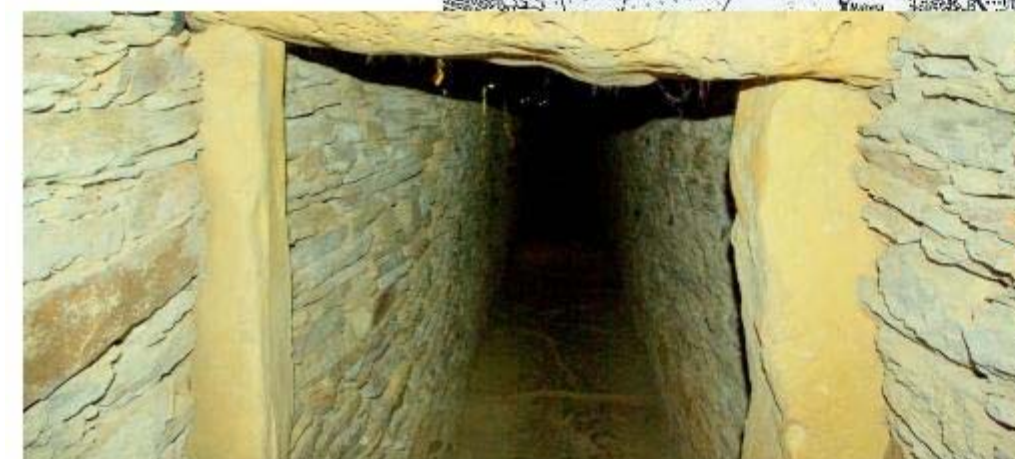
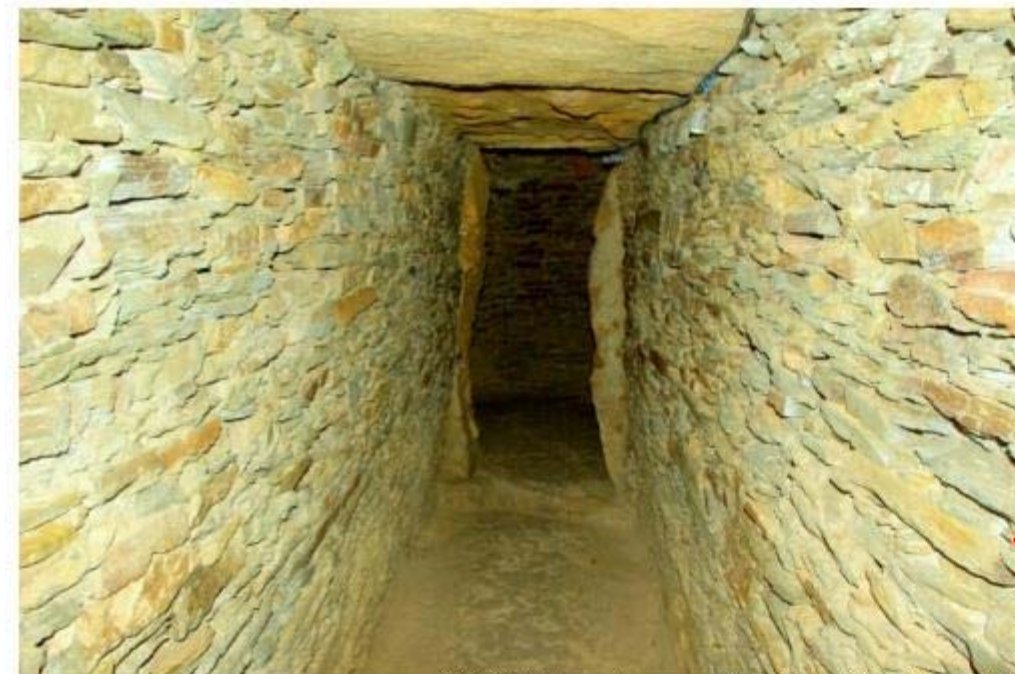
Now, the protection will be increased, these town planning has been unauthorized and the motorway project has been changed.

“Archeological and
Landscape North Aljarafe
Park”

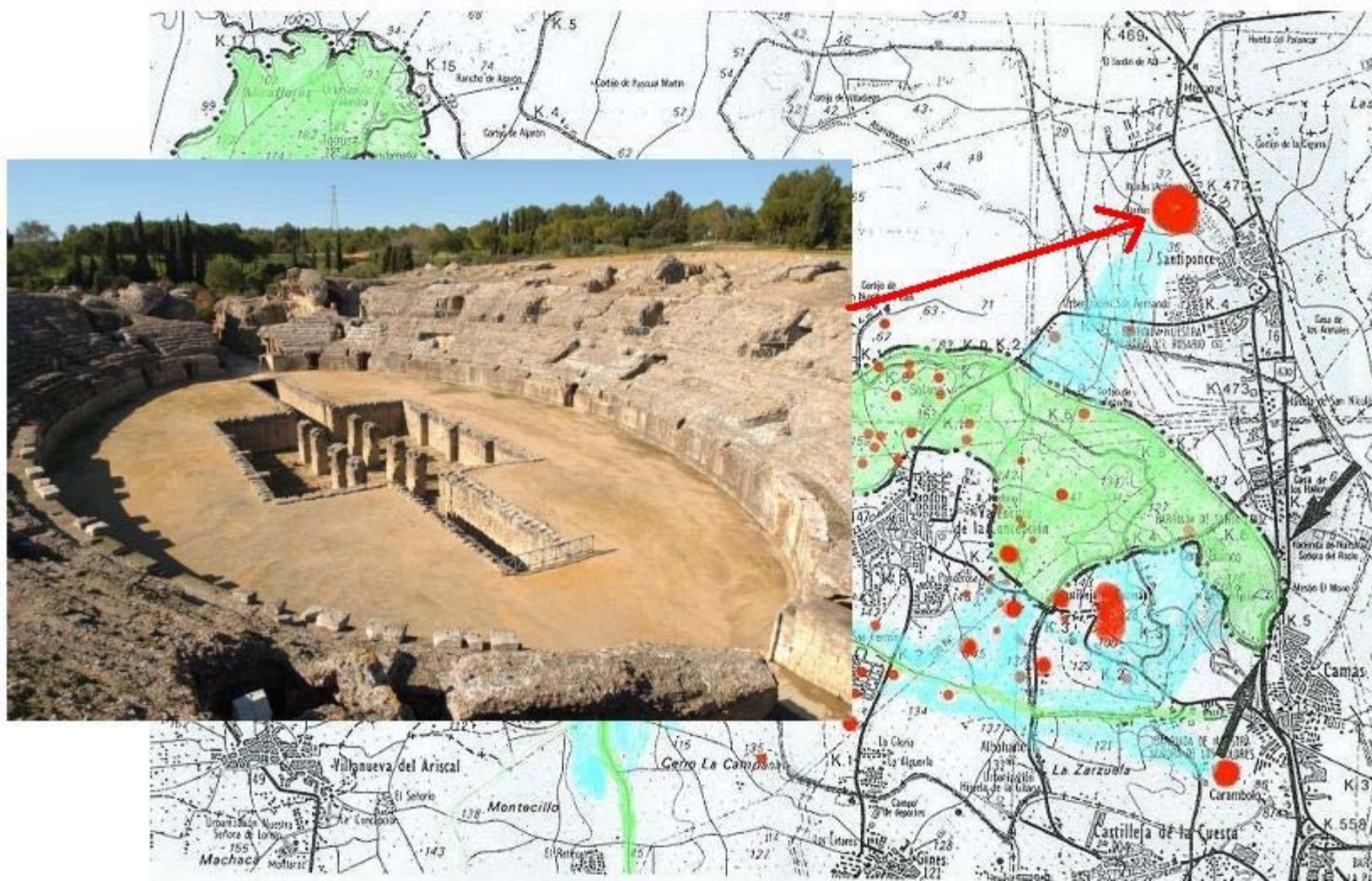
Proposal to expand
the protection and
to create an
integrate
management of
these spaces



A big calcolithic city



The old roman city, Itálica



**Phoenician place
“El Carambolo” treasure**



Historical places

**Palacio Nuestra Señora
del Buen Aire (S. XVIII)**



Jardines de Forestier



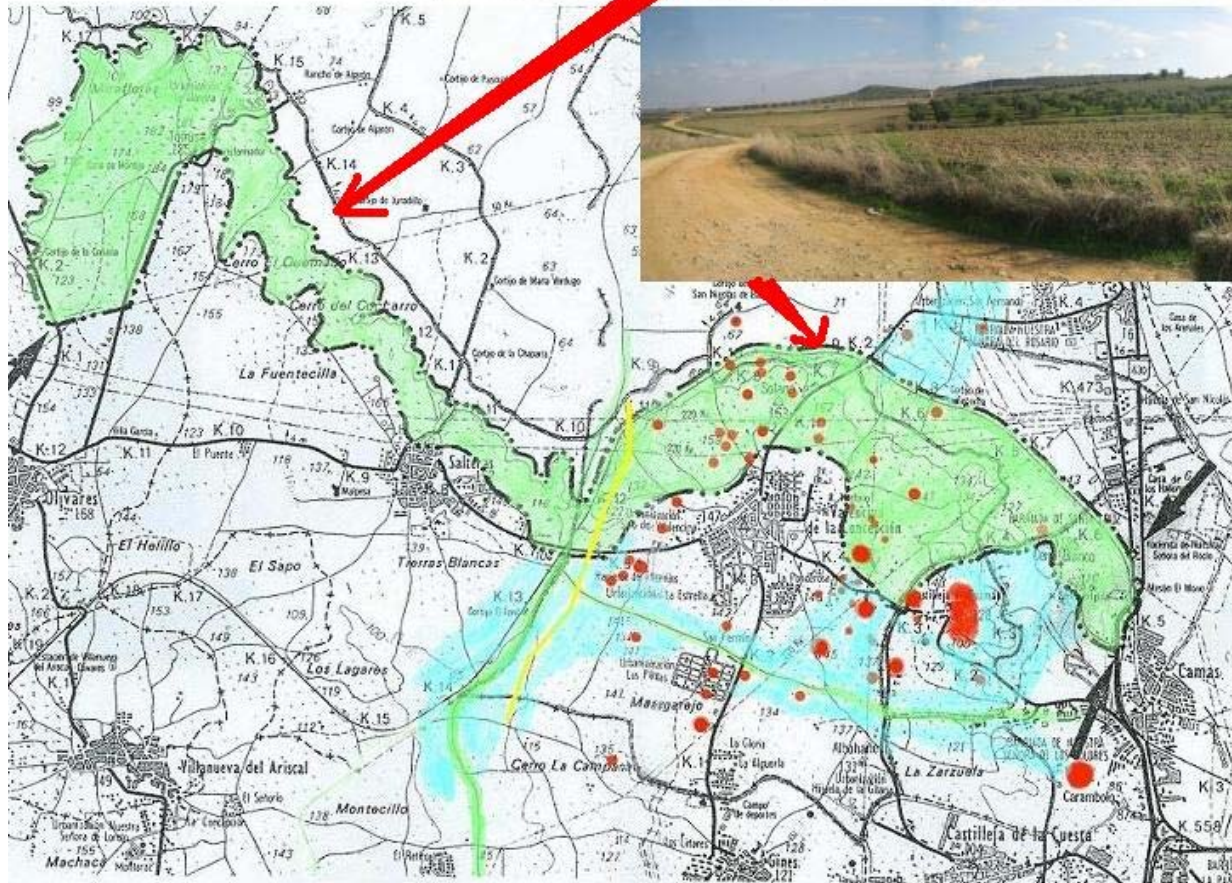
Vista desde los Jardines (180°)





**“Archeological and
Landscape North
Aljarafe Park”**

**Protected
LandScape**



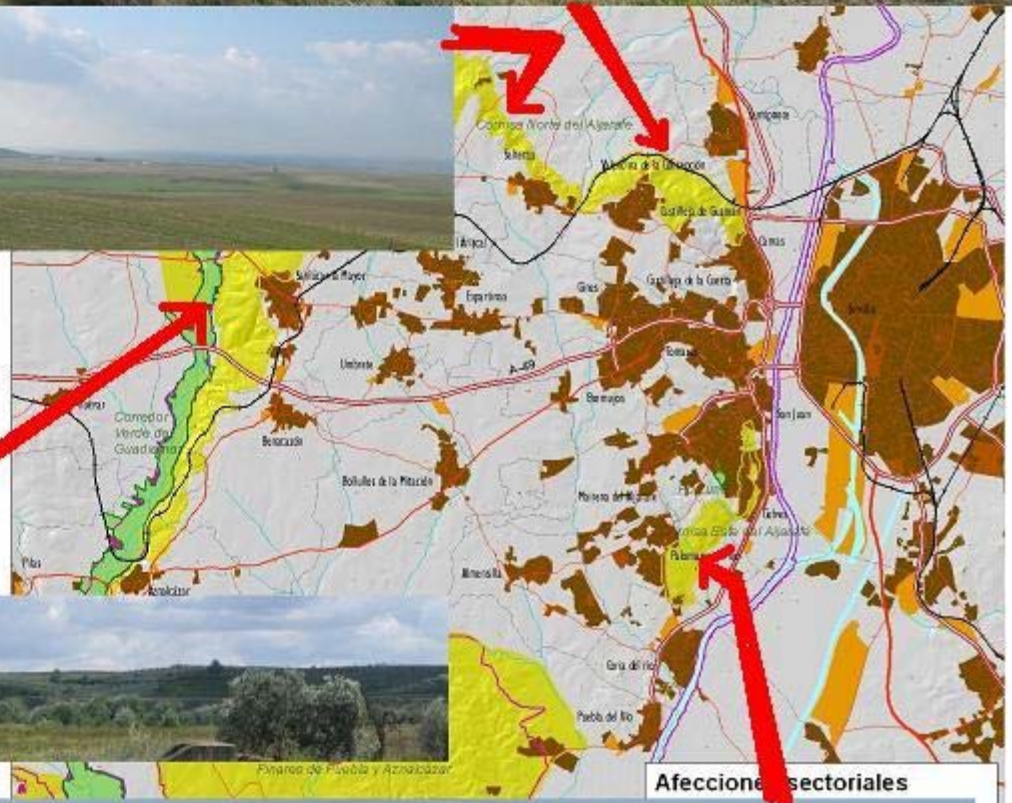
Defense of the “Cornisa del Aljarafe”.

El Aljarafe is in a plateau, whose edges are called “Cornices of the Aljarafe”. They are beautiful landscapes . Insufficient protection and the savage town planning, in two towns, endangered these spaces.

Adta and others NGOs fought in defense of these spaces.

Now, the protection is better and these two town planning have been unauthorized.

Cornisa Norte



Cornisa Oeste



Cornisa Este





The End

More information: www.adta.es